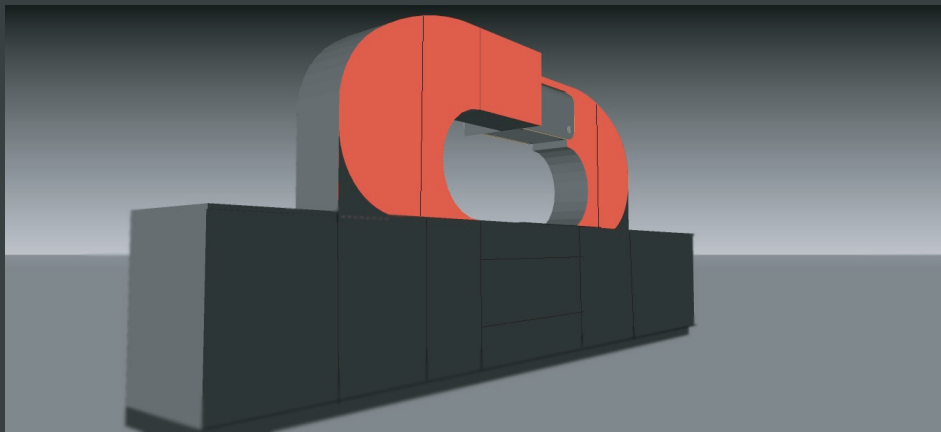


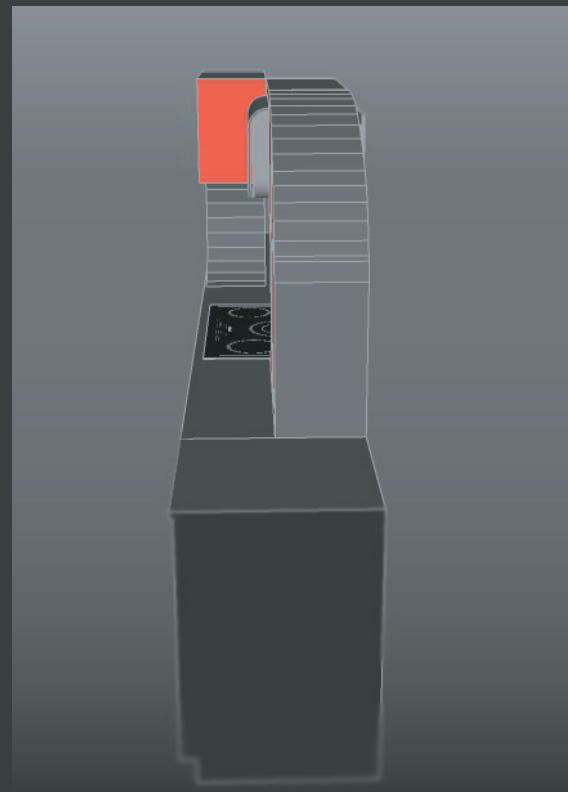


CASSANDRA CUCINE

idola
geometry

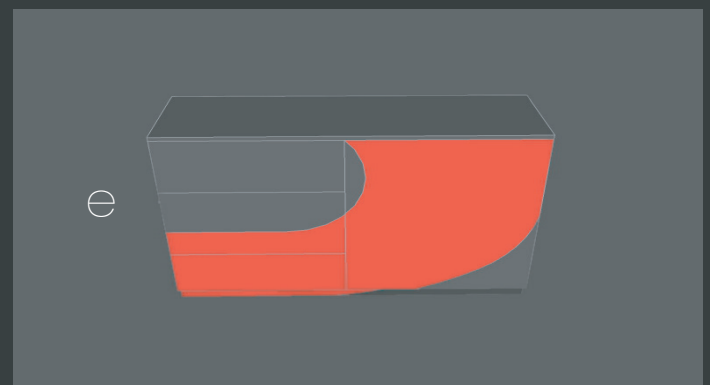
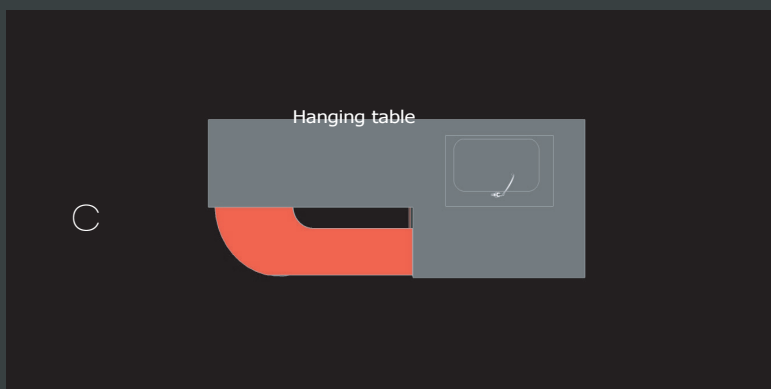
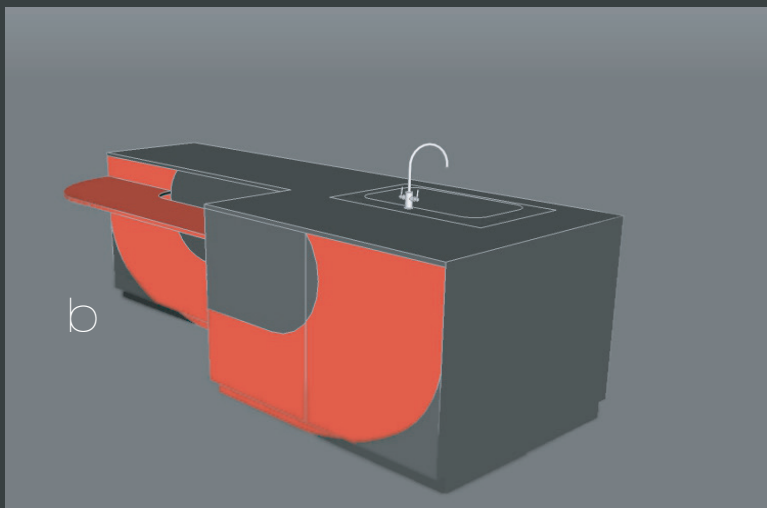
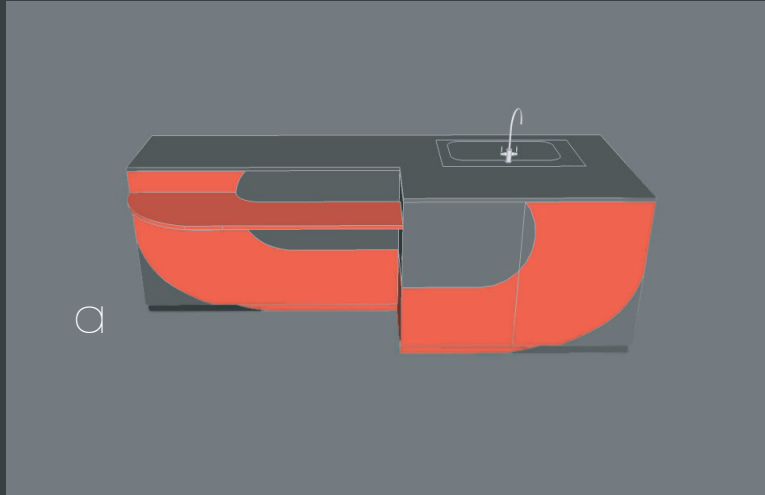


The two opposed, curved modules are setup on different parallel axxes. Each module is the mirrored reflection of the other.





modules layout



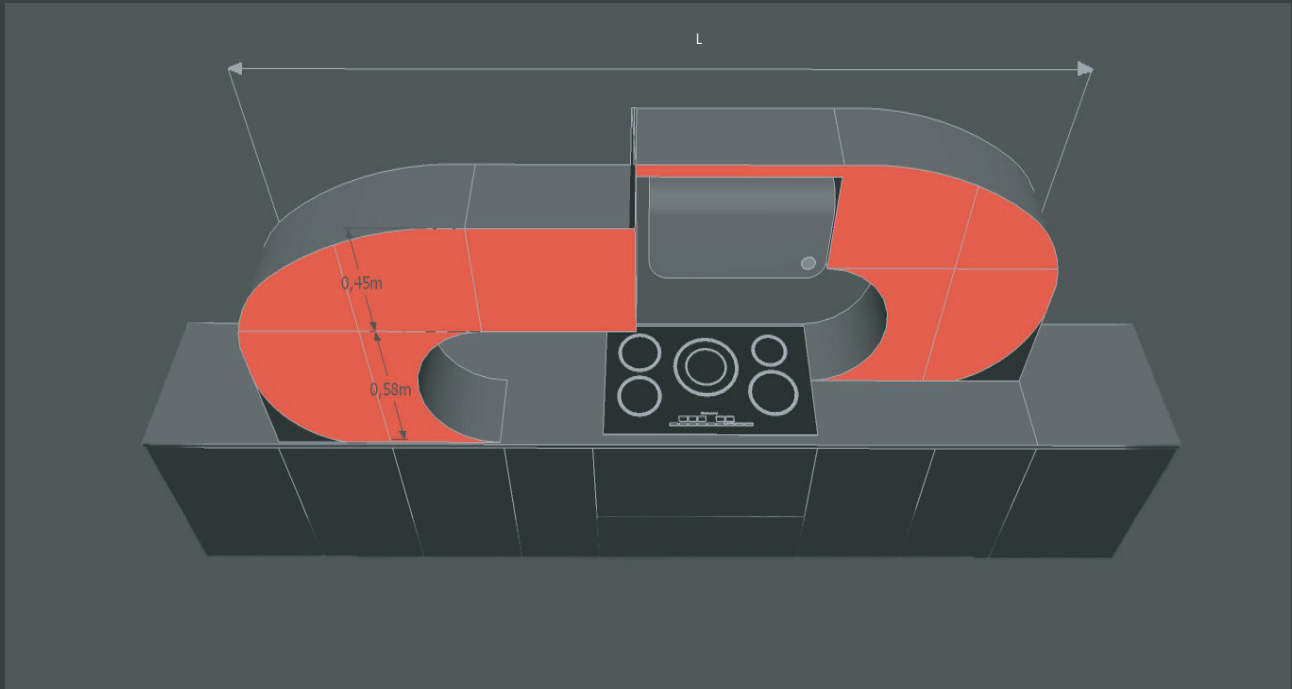
A set of curved colored patterns attached on the square modules, give the curvature effect.

a, b: The island features two different depths

c: Island plan view

d: Any fridge-freezer can be coated with the same color pattern of the modules

e: Simple square modules featuring curved patterns



The minimum length (L) of the two curved modules is 2,50m. There is no maximum limit.